

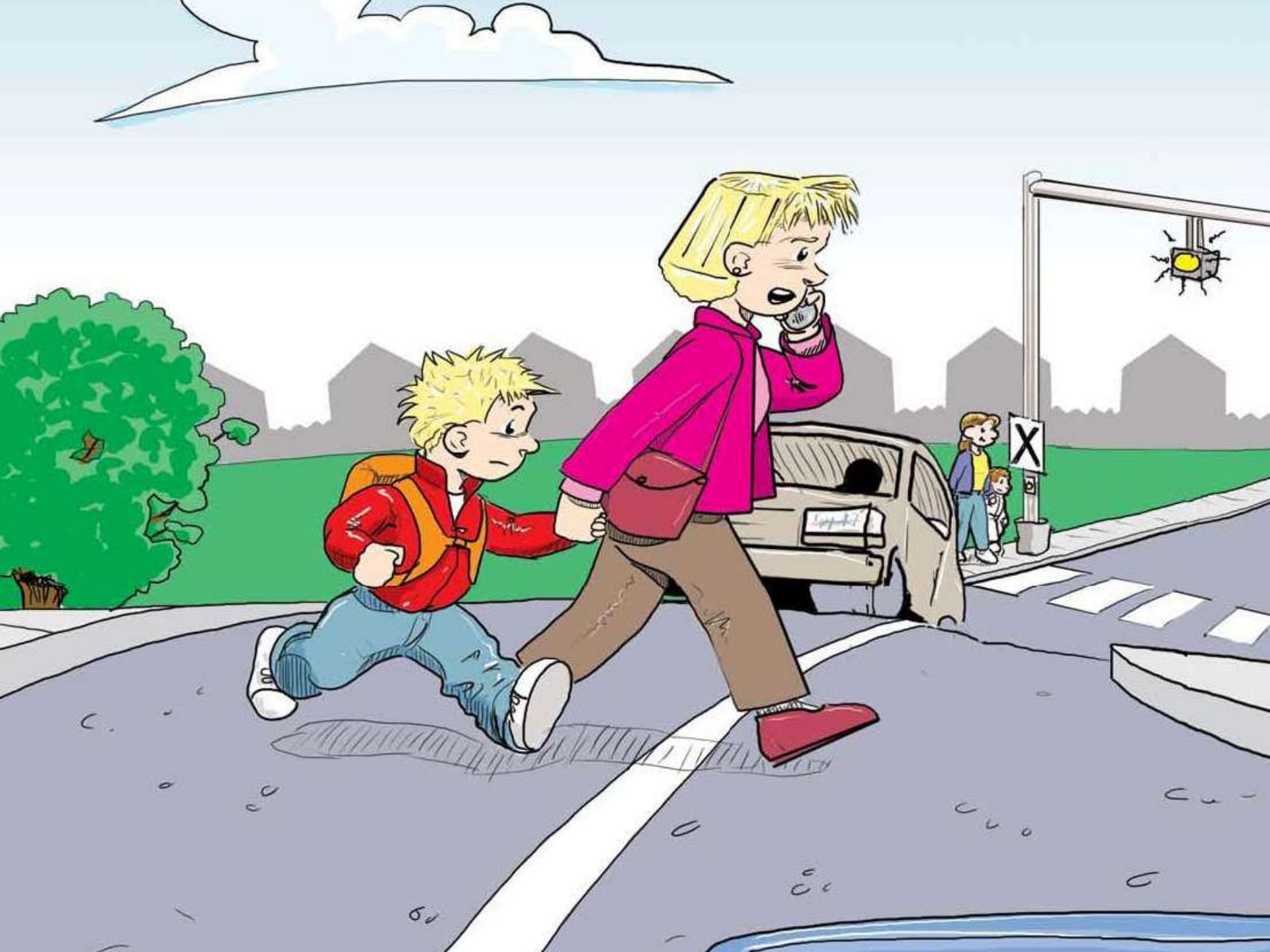
Way to Be—*Living Respectfully*

Presented by
Josy Wicentowich
Alberta Motor Association



Program Goal

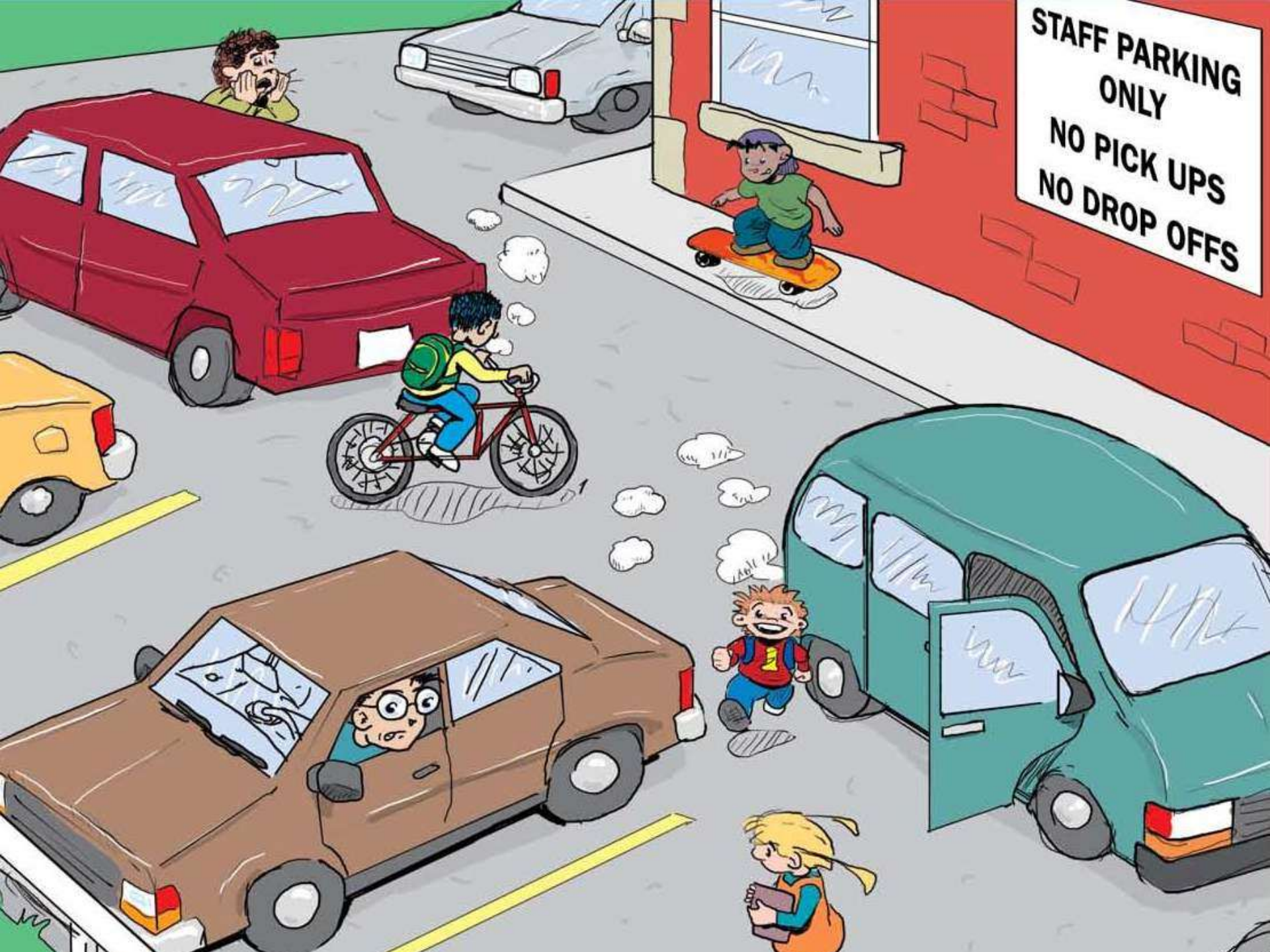
- Create a culture of traffic safety within the school community
- Reinforce shared responsibility and respectful behaviour



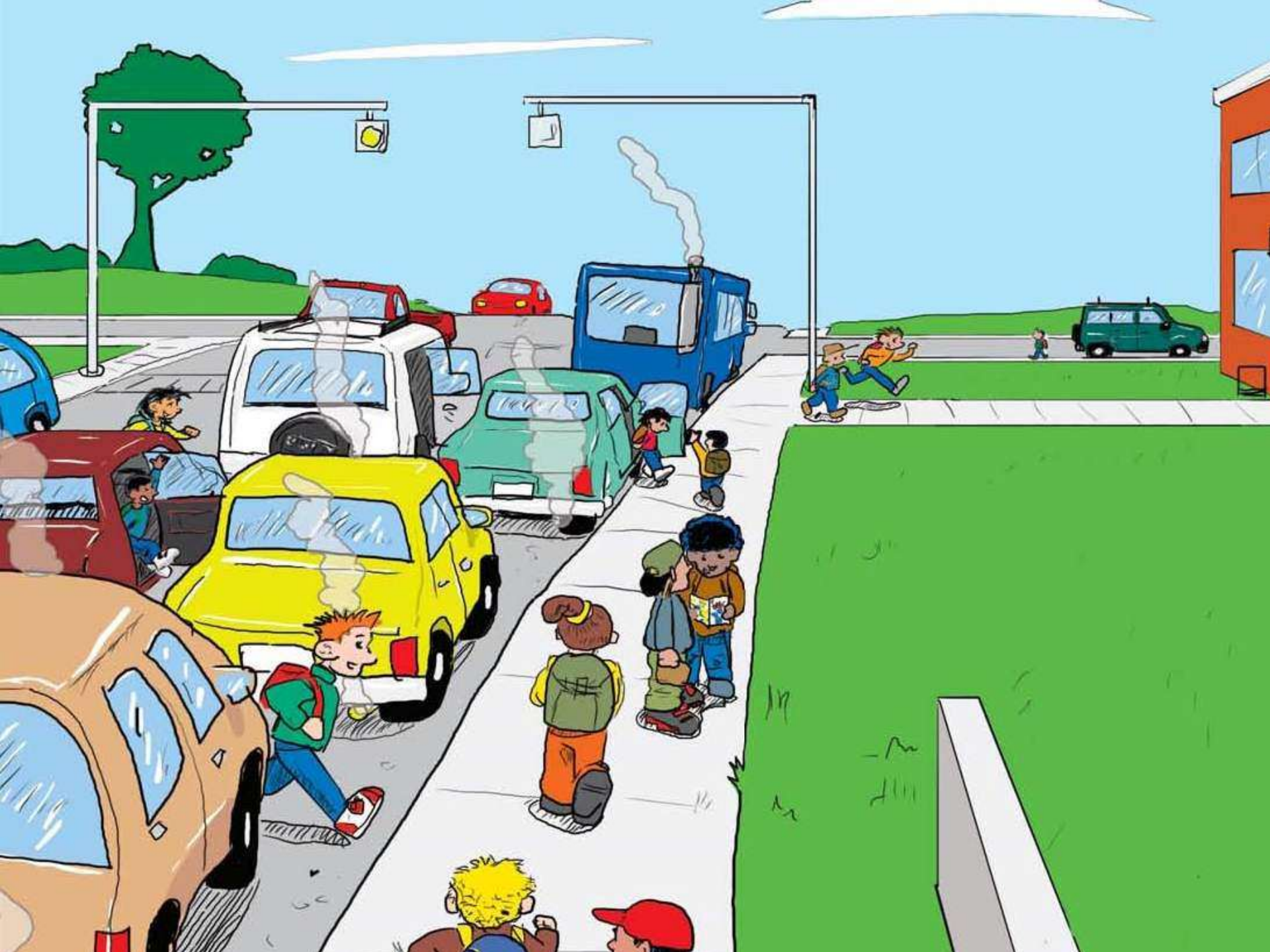


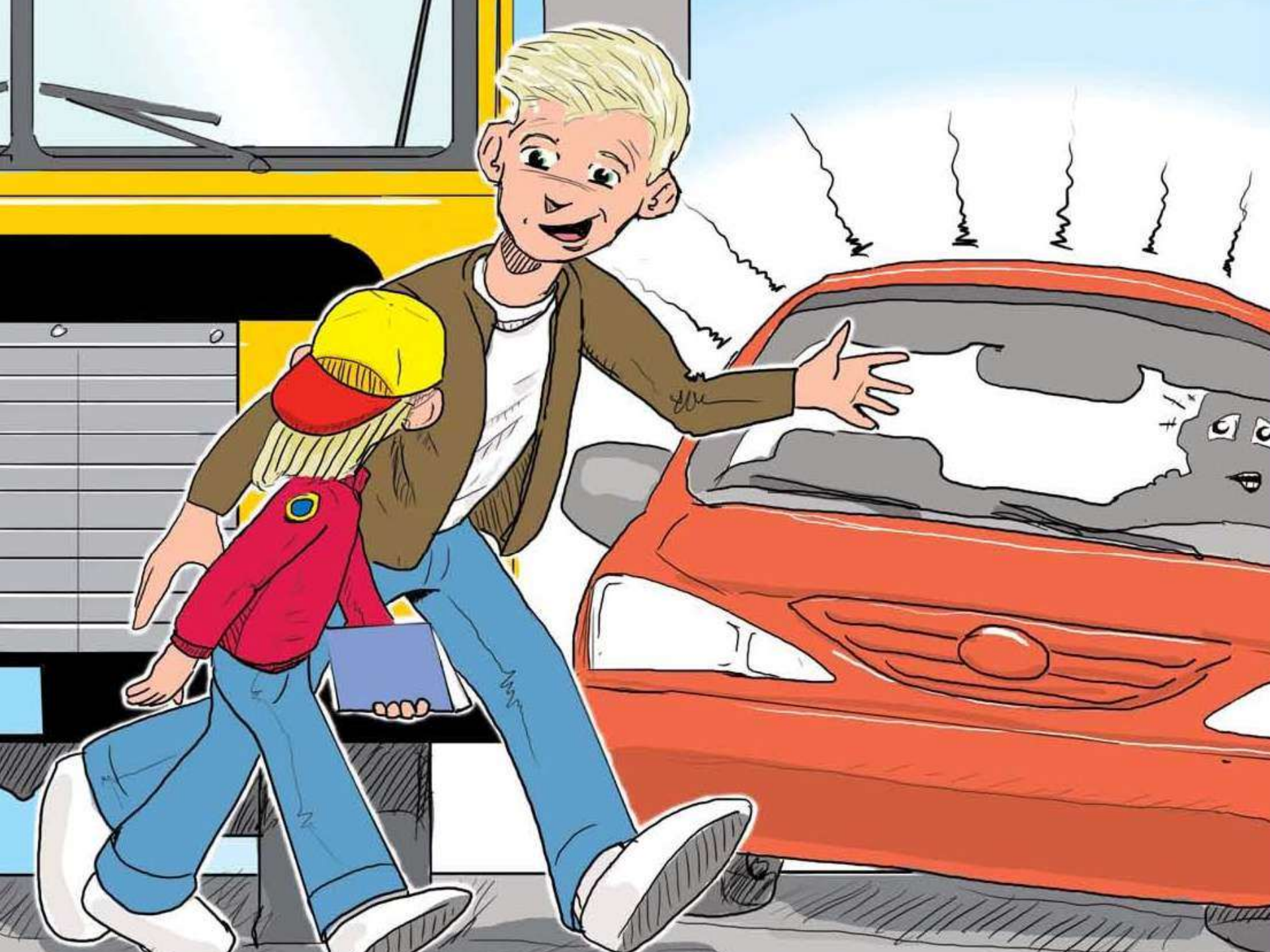


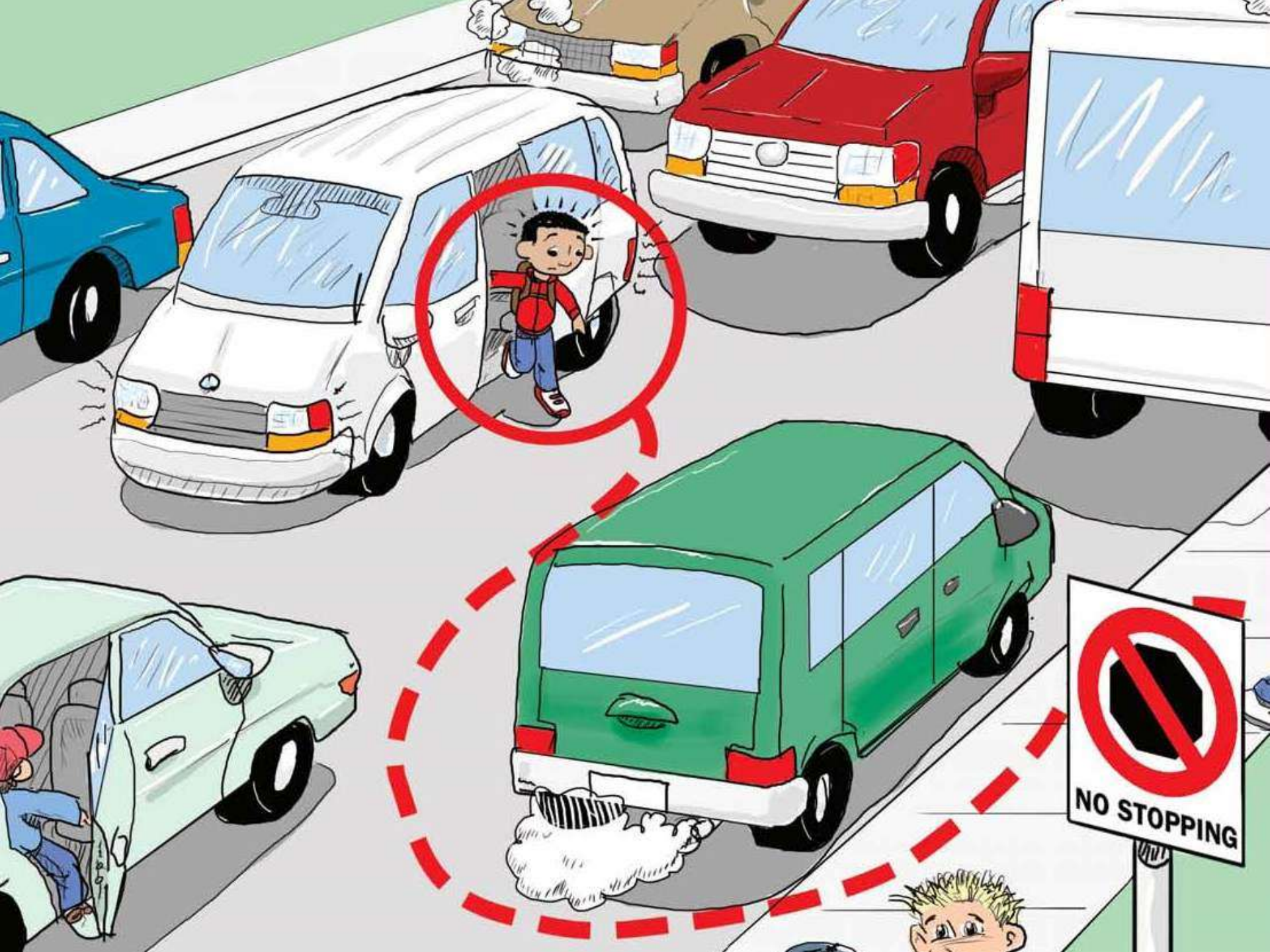




STAFF PARKING
ONLY
NO PICK UPS
NO DROP OFFS








NO STOPPING

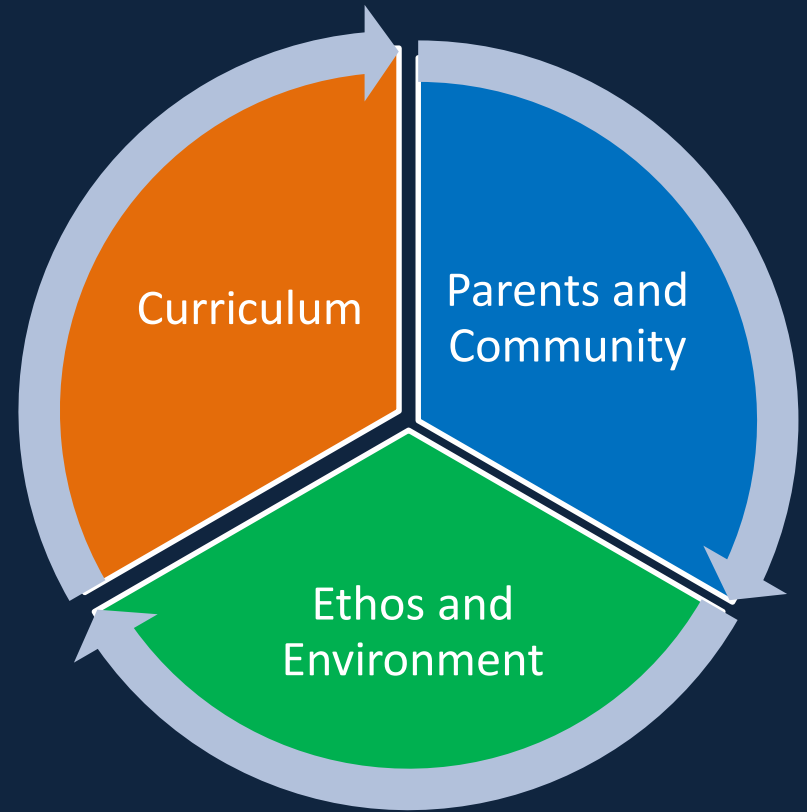


Everyone has the...

- Right to feel safe and the responsibility to respect other people's safety

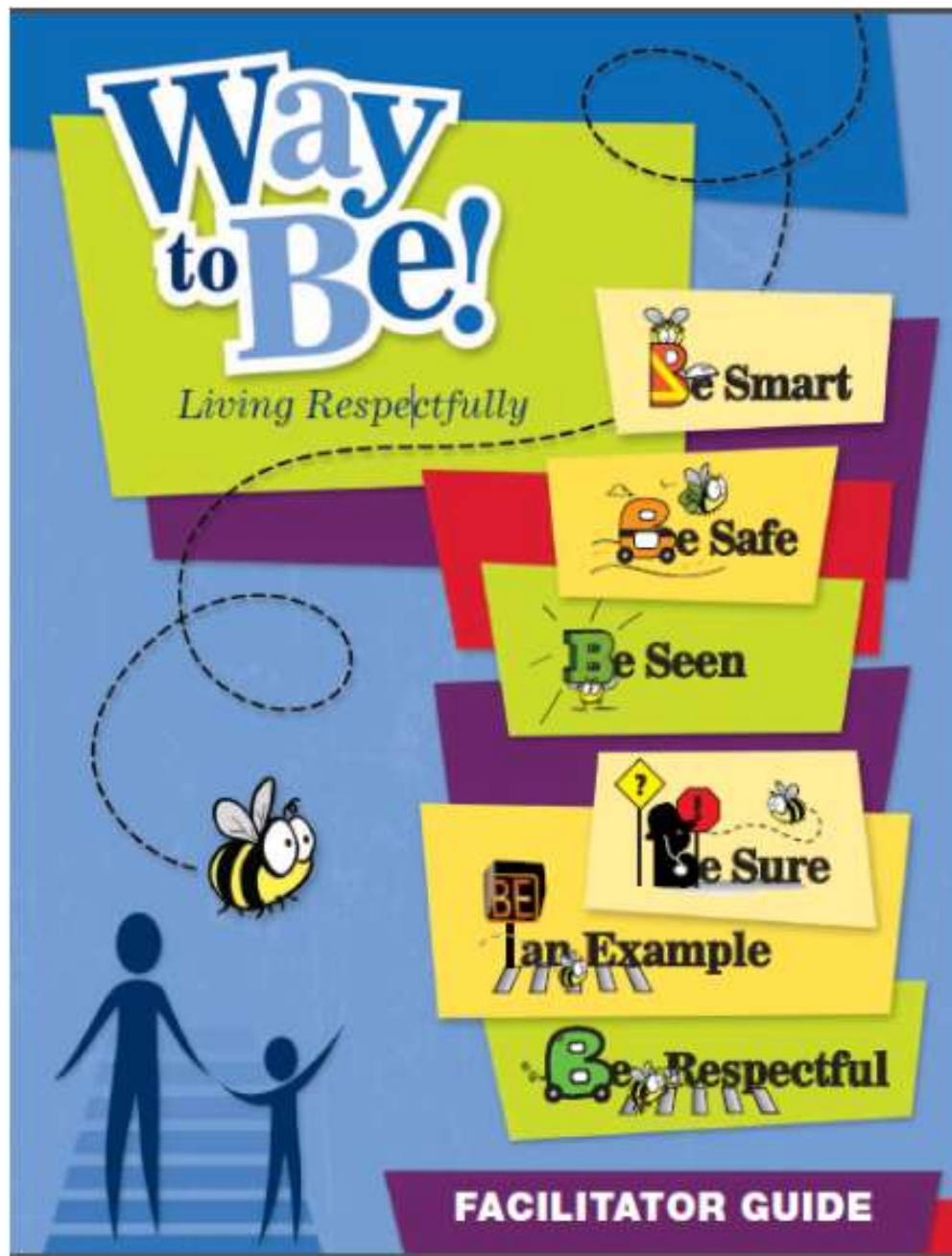


Principles for Road Safety Education Model



To be successful school communities need to:

- embed road safety education programs within a curriculum framework
- encourage a sense of shared responsibility
- engage the broader school community and
- work in collaboration with other organizations that have shared strategic goals





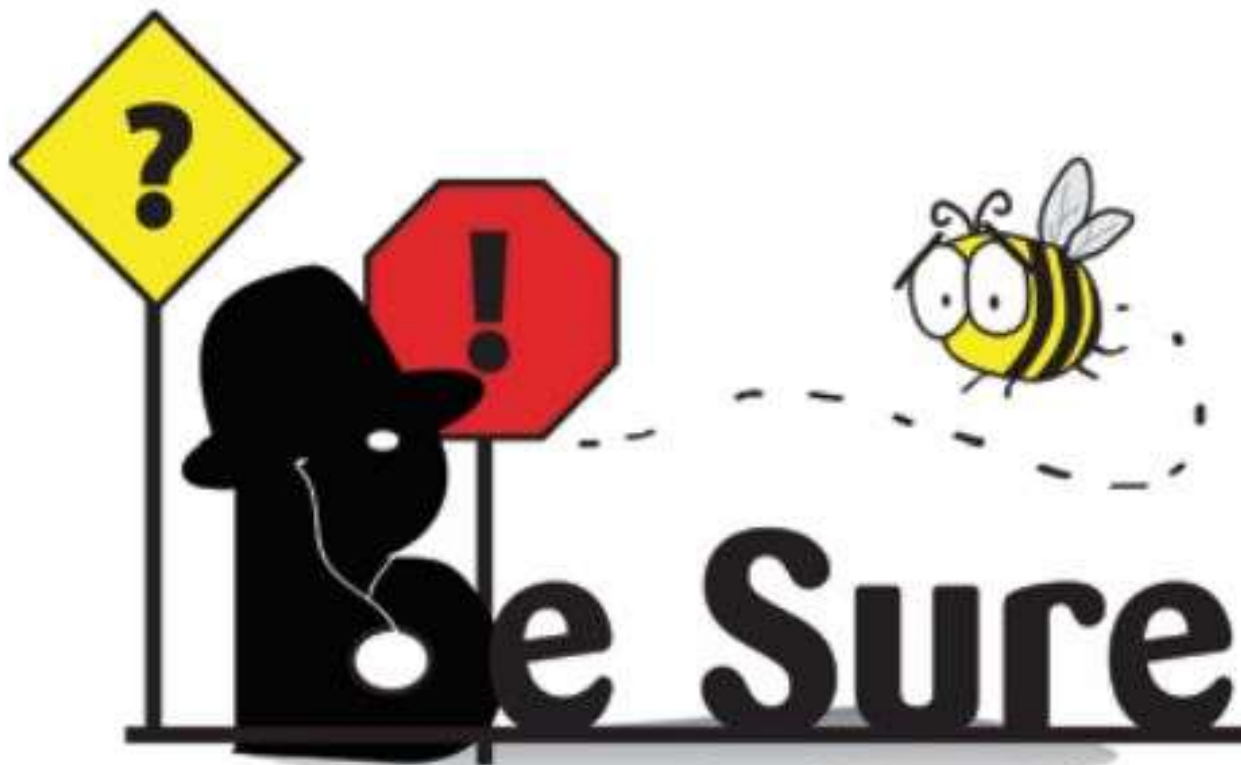
Know the rules and the risks!



Be Safe

Take responsibility!





Be aware of your surroundings!



Lean Example



Model safe behaviors every time!

Be  **Respectful**

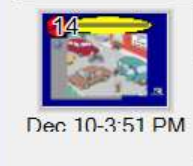
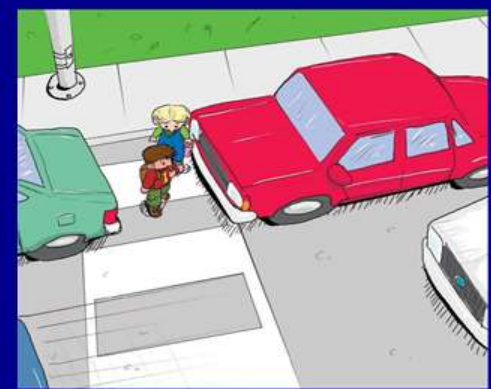
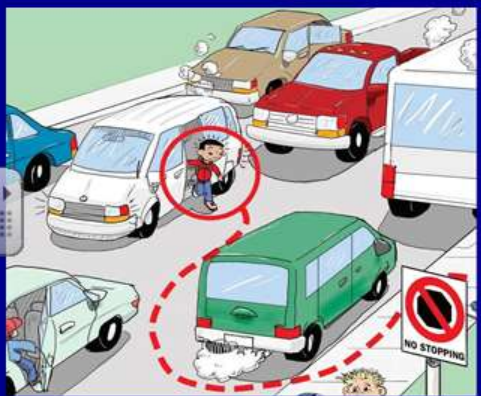
Show how you value others!



Click on the **Oops** behaviour you would like to **change** at your school.



click to home page



Auto-hide

I can **BE** an Example _____ by:
Model safe behaviors every time!

Using the
crosswalk
every time

I can  an Example  by:
Model safe behaviors every time!

Using the
crosswalk
every time

We can  an Example  by:
Model safe behaviors every time!

parking and
walking to
school

What's Wrong With This Picture?



Is this respectful?

How should the driver show respect for the children's safety?

What's Wrong With This Picture?



Is this safe?

Where should the driver stop to drop off children?

Carmelo walks
between the
buses to cross
the street

Juan's dad drops him
off in the middle of the
road because he can't
find a parking spot in
front of the school.

Jeopardy



Way
to Be!



Living Respectfully

[Click to begin.](#)

Concern	Pre	Post	Difference
Jaywalking	33	5	-28
Encouraging jaywalking	18	6	-12
Parking too close	19	2	-17
Dropping off	38	12	-26
parking lot	63	2	-61
Adding to congestion	44	23	-21

Summary of Resource Package Evaluation Components

RATING Scale
Agree

(1) Strongly Disagree

(2) Disagree

(3) Undecided

(4) Agree

(5) Strongly Agree

Criteria	1	2	3	4	5
1. The resources included in the package were organized in a helpful way.	0	0	0	0	100%
2. The lesson plans were clear and easy to follow.	0	0	0	33%	67%
3. The activities supported the concepts being presented.	0	0	0	33%	67%
4. The resources were user friendly.	0	0	0	33%	67%
5. The language used and work required by students to complete the activities was appropriate	0	0	0	17%	83%
6. Students enjoyed completing the activities.	0	0	0	17%	83%
7. I would use these resources again with students.	0	0	0	17%	83%
8. The resources helped to increase awareness and knowledge of the participants' role in addressing traffic safety concerns.	0	0	0	17%	83%

What's next?

- **2014**
 - Additional pilots and collect data
 - Develop online resources
- **2015**
 - Make the program easily accessible to all schools online

