

# Building Accessible, Temporary Pedestrian Pathways through Sidewalk Construction



**CARSP 2015 Conference**  
**Ottawa, Canada**

# Purpose of this Presentation

## To Introduce:

- **Concept of Accessible pathways**
- **Concept of Detectable Guidance**
- **Compare MUTCD & OTM**
- **Next Step: Education!**

# The Need for Accessible Pathways



**Provide detectable guidance for pedestrians, including those with limited vision!**



# Non-Detectable = NO Guidance





**Wheelchair users are pedestrians too.**





# Replace non-compliant pathways with...









# What makes a facility accessible?



**Oct. 2007:**  
**Detectable  
Pedestrian  
Channelization  
Workshop**

# PROWAG

**PROWAG:**  
***Public  
Rights  
Of  
Way  
Accessibility  
Guidelines***



Proposed Accessibility Guidelines  
for Pedestrian Facilities  
in the Public Right-of-Way  
July 26, 2011

UNITED STATES ACCESS BOARD  
A FEDERAL AGENCY COMMITTED TO ACCESSIBLE DESIGN



# PROWAG Standards



## *A Sample:*

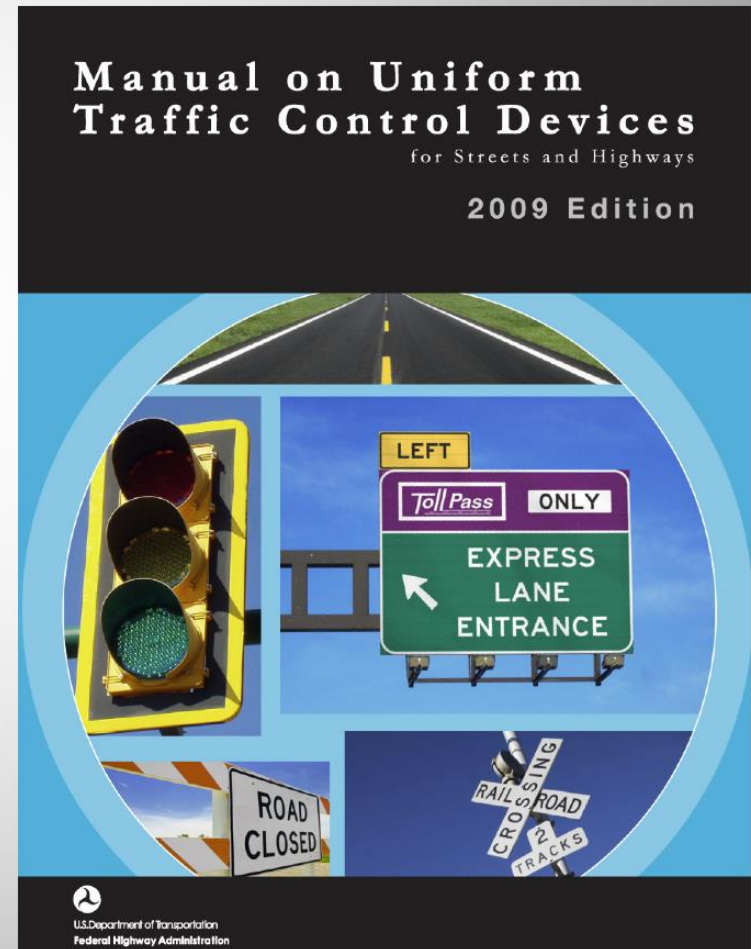
**R205, Barricades & Channelizers:**

- Continuous, stable, non-flexible
- Devices from MUTCD.

**PROWAG mirrors MUTCD!**

# Federal Highway Administration (FHWA)

## **MUTCD:** ***Manual on Uniform Traffic Control Devices***





# MUTCD 2009 Edition: Standards for Accessible Pathways

## *A Sample: Section 6D.01, Pedestrian Considerations*

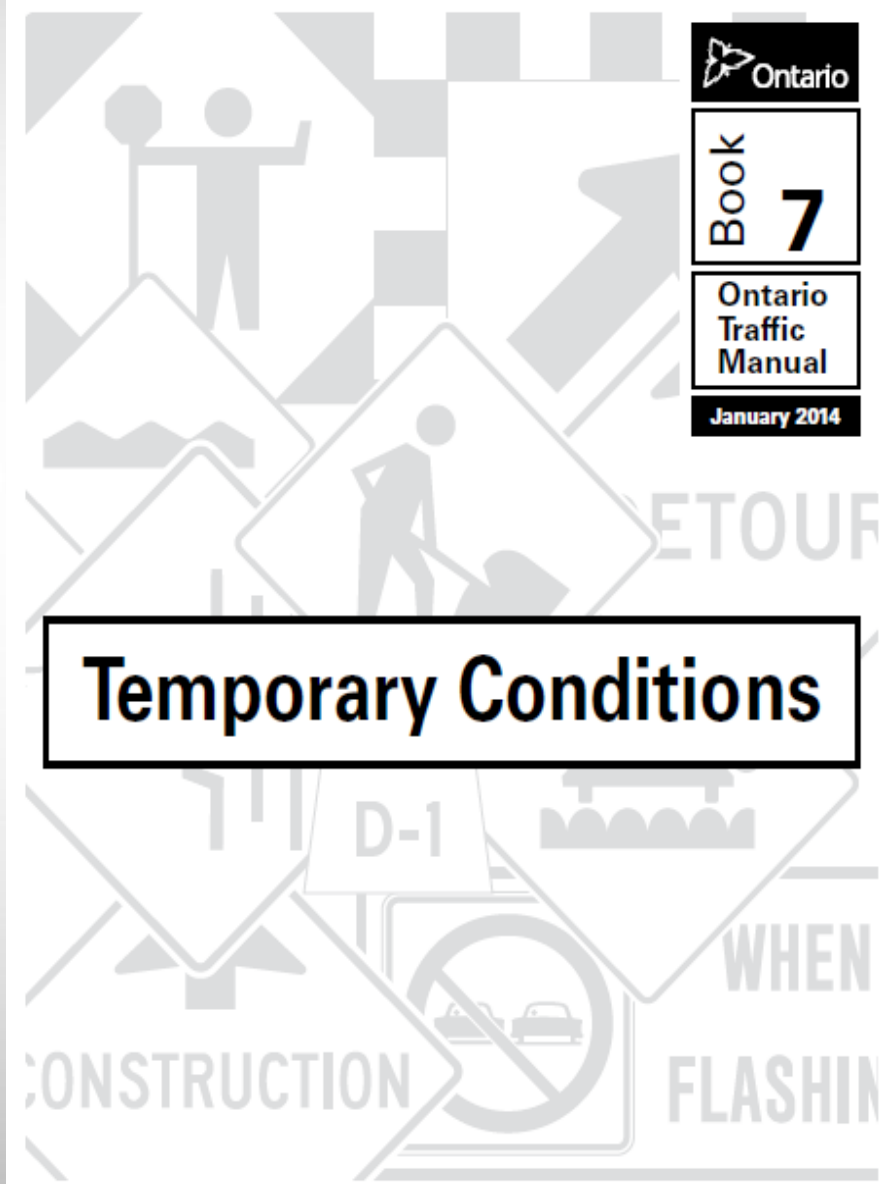
- Adequate pedestrian access **SHALL** be provided in a work zone.
- Accessibility and detectability **SHALL** be maintained along the alternate route.



# Ministry of Transportation, Ontario

## *Ontario Traffic Manual (OTM)*

Language similar to  
**PROWAG & MUTCD!**





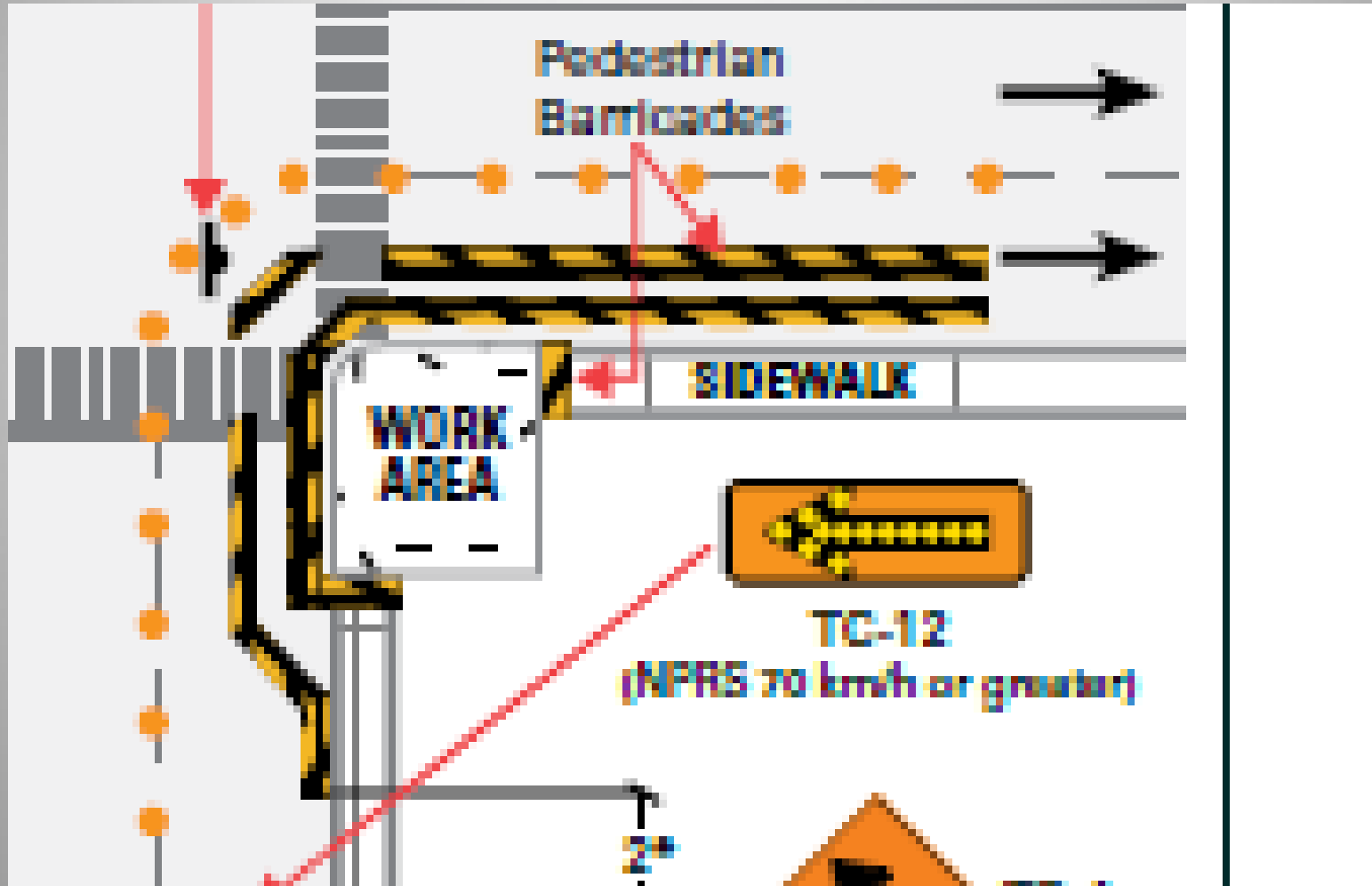
# **OTM Book 7:**

## **Characteristics of Pedestrian Pathways**

### ***Pedestrian Safety Considerations, Section 2.62***

- **travel paths: safe, convenient, clearly delineated**
- **pedestrian barricade: minimum 1.0 m (3.3') above surface**
- **sidewalk width: minimum 1.2 m (3.9')**
- **width of 1.8 m (5.9') preferred, for 2 wheelchairs to pass**
- **use curb ramps to avoid hazards**
- **avoid slippery walkway surfaces**

# OTM Traffic Layout: Detail, TL-65 Pedestrian Accommodation



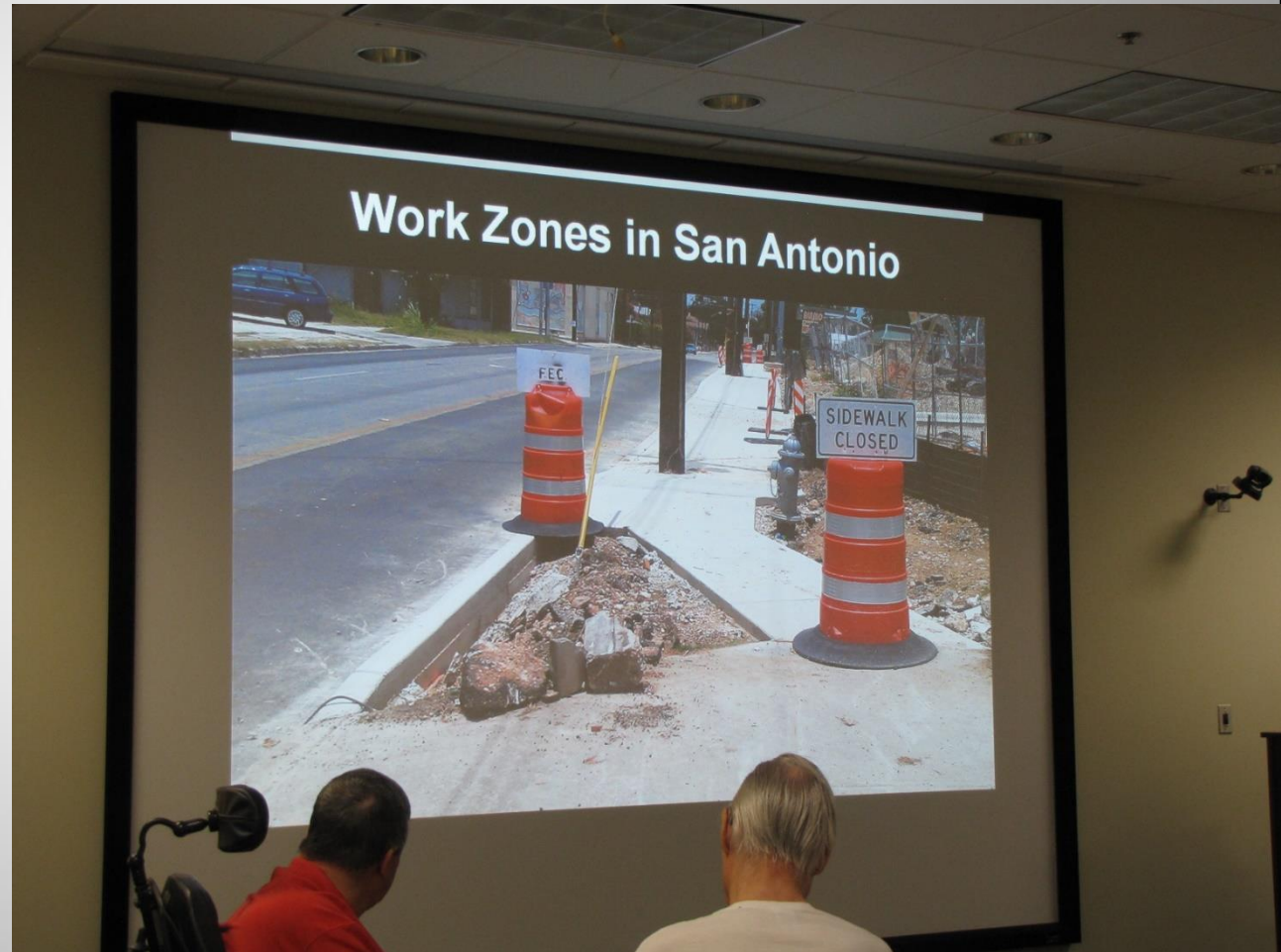


# What Next?

- **Educate**
- **Create Policy**
- **Adopt Law or Code**
- **Enforce, enforce, enforce**

# Training Seminars & Webinars

- Guide Booklet
- On-site Seminar
- Webinar



# References

- *“Proposed Guidelines for Pedestrian Facilities in the Public Right-of-Way”*, United States Access Board web site,  
<http://www.access-board.gov/guidelines-and-standards/streets-sidewalks/public-rights-of-way/proposed-rights-of-way-guidelines>
- *“Manual on Uniform Traffic Control Devices”*, 2009 Edition, (pages 57, 59, 100, 106, 82) US Department of Transportation, Federal Highway Administration, Washington DC.  
<http://mutcd.fhwa.dot.gov/pdfs/2009/part6.pdf>
- *“Ontario Traffic Manual, Book 7: Temporary Conditions,”* Ministry of Transportation, Ontario, St. Catherine’s Ontario, January, 2014  
<http://applications.roadauthority.com/Standards/?Id=66B9CBB8-B451-4F71-A8CD-81C40C554C91>



# Thank You.



**Tim Cox**

**Cox Transportation**

**216-244-3207**

**timcox@comcast.net**