

DO CHANGES IN ALCOHOL ACCESS LAWS IMPROVE SAFETY?

An analysis of injuries and police statistics in Wetaskiwin, Alberta after an amended bylaw on liquor sales – preliminary results

Presentation by: Kathy L. Belton

Authors: J. Randall & D. Voaklander

BACKGROUND

Alcohol & Injuries

- Significant factor in the occurrence (Thomas, 2004; Lea, Black and Asbridge, 2009)
- 16.2% of deaths and 13.2% of disability-adjusted life years from injuries attributed to alcohol in 2009 (WHO)
- Motor-vehicle collisions and suicide leading cause alcohol related injury deaths (CCSA,2006)
- In Alberta, 32% of trauma patients tested positive for alcohol, with an average BAC of 39.0 mmol/L (2013, PTC)
 - 46% were injured in traffic related incidents
 - 25% were injured due to violence
 - 21% were injured in a fall

OBJECTIVES

- To examine the effects of an alcohol restriction bylaw on:
 - Violence
 - Motor vehicle collisions
 - Impaired driving
- » In Wetaskiwin, Alberta



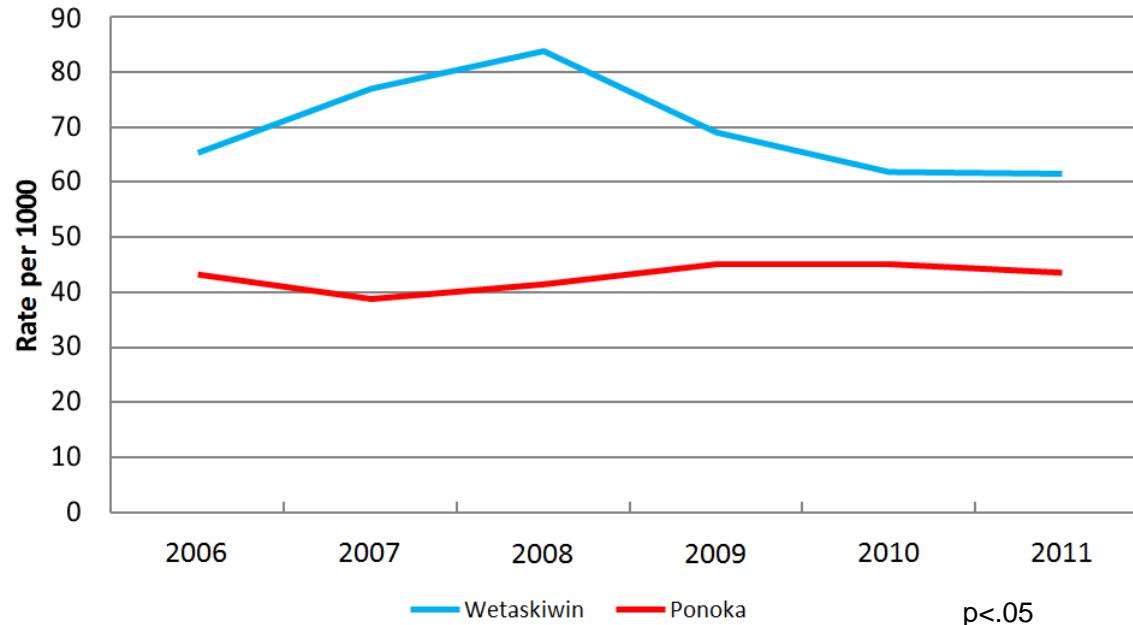
METHODS

- Descriptive study using data from 2006 – 2011
- Emergency department visits due to injuries
- RCMP incident reports for violence/assaults and MVC
- Ponoka, Alberta used as a comparison community



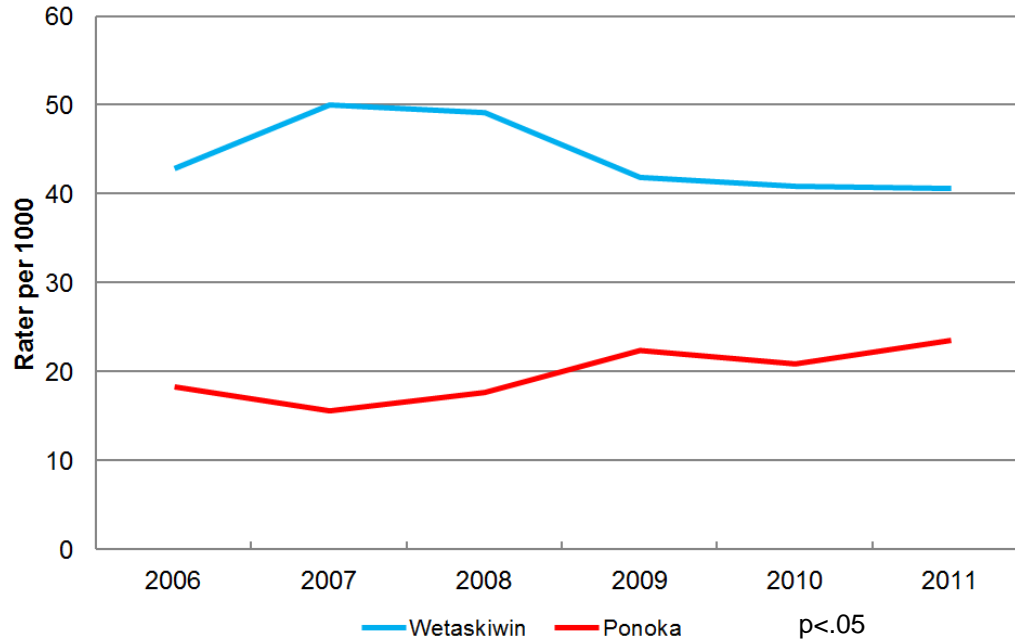
RESULTS

Figure 1 – Age-sex adjusted rates for non-motor vehicle related emergency department visits



RESULTS

Figure 2 – Age-sex adjusted rates for assault related emergency department visits



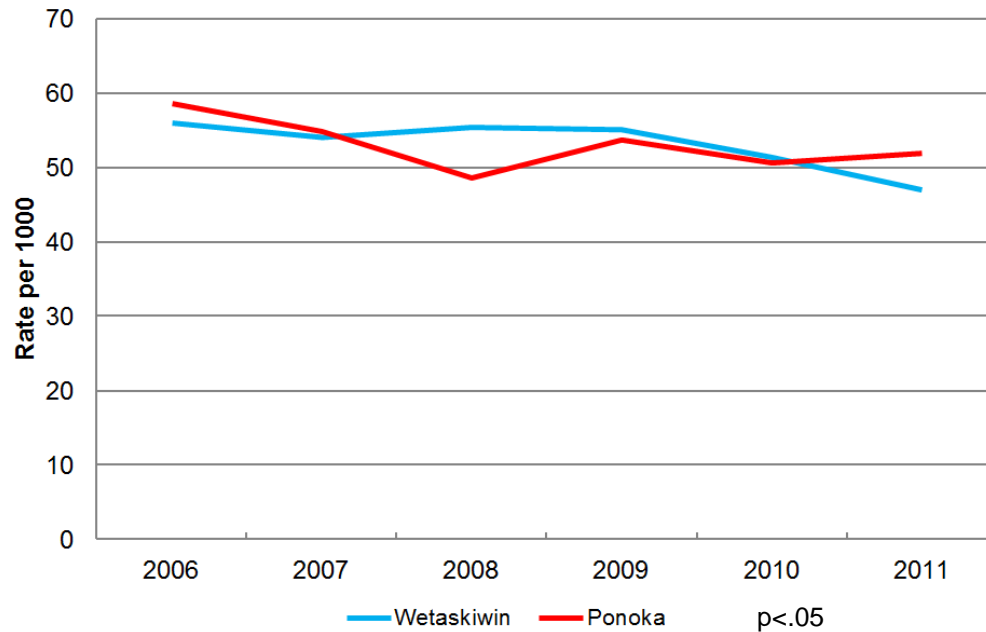
RESULTS

Figure 3 – Age-sex adjusted rates for self-harm related emergency department visits



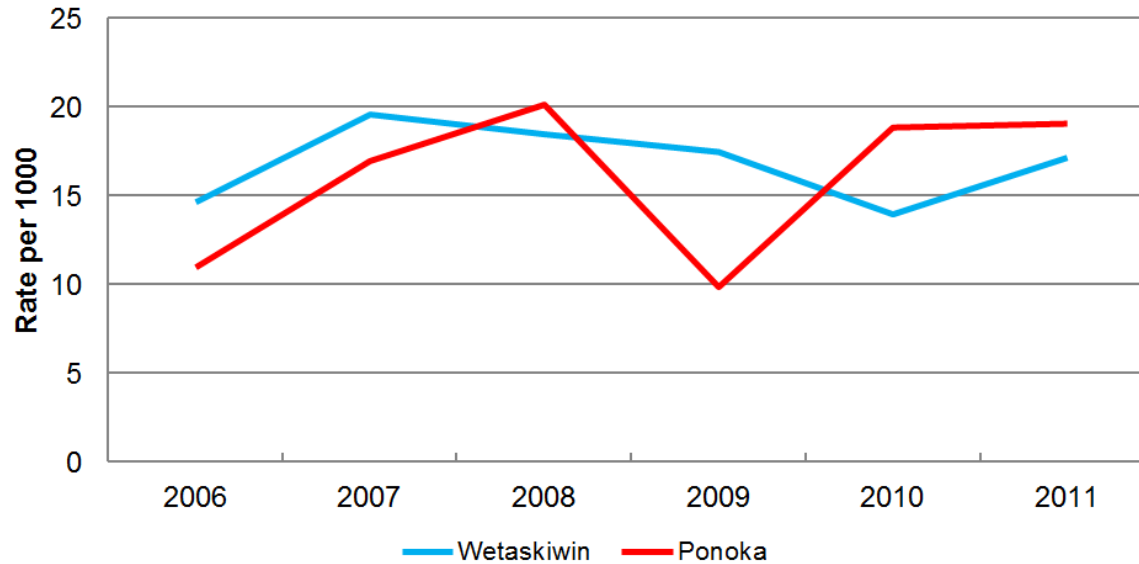
RESULTS

Figure 4 – Rate of police attended motor vehicle collisions



RESULTS

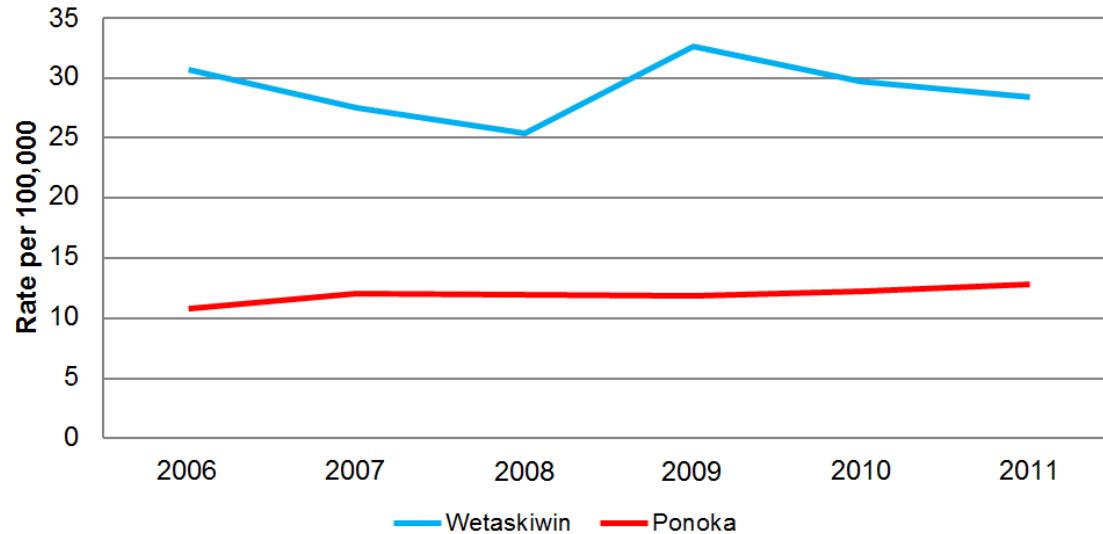
Figure 5 – Rate of impaired driving charges



p<.05

RESULTS

Figure 6 – Rate of assault charges



p<.05

CONCLUSIONS

- A modest improvement in violence and traffic related parameters
- Observed effect in Wetaskwin lower than other studies
- Universal preventative strategies such as regulating the times alcohol can be purchased is effective

THANK YOU

INJURY PREVENTION CENTRE
4075 RTF – 8308 114 St NW
Edmonton AB T6G 2E1
Canada

tel. 780.492.6019 | fax. 780.492.7154
ipc@ualberta.ca