

# Railway Crossing Information System

CARSP Conference  
June 13, 2018

Presented by Mathew Bond, ITS Engineer



Ministry of  
Transportation  
and Infrastructure

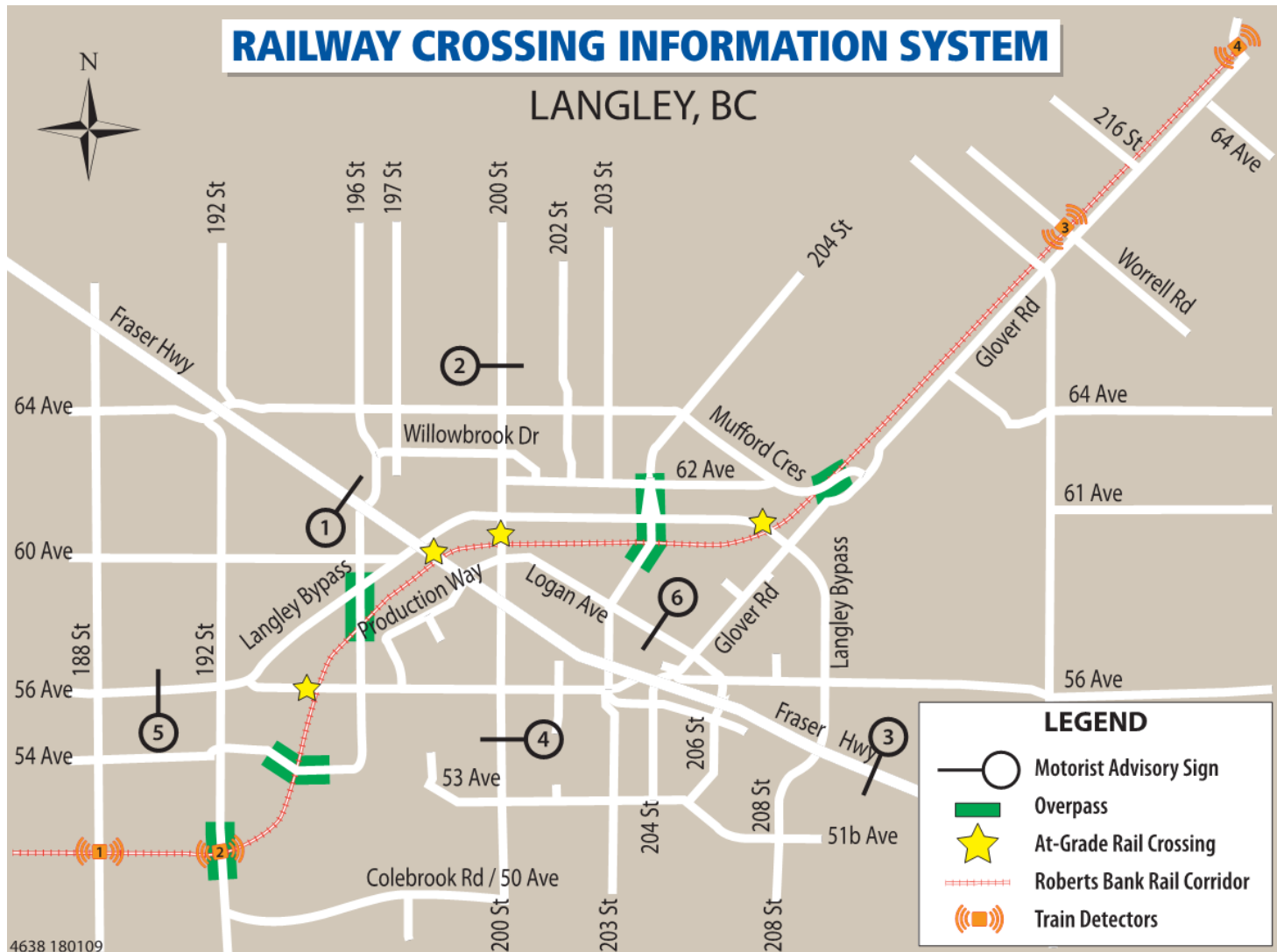
# Agenda

- Problem Statement
- Key Plan
- Concept of Operations
- Safety Elements
- Train Detectors
- Motorist Advisory Signs
- Evaluation

# Problem Statement



# Key Plan



# Concept of Operations



## ***Detect Train***

- Detect train
- Track the train through the rail corridor
- Identify length of train
- Predict the time and duration of intersection blockages for train



## ***Signs On***

- Activate motorist advisory signs to provide advance notice to drivers who are approaching the at-grade rail crossings

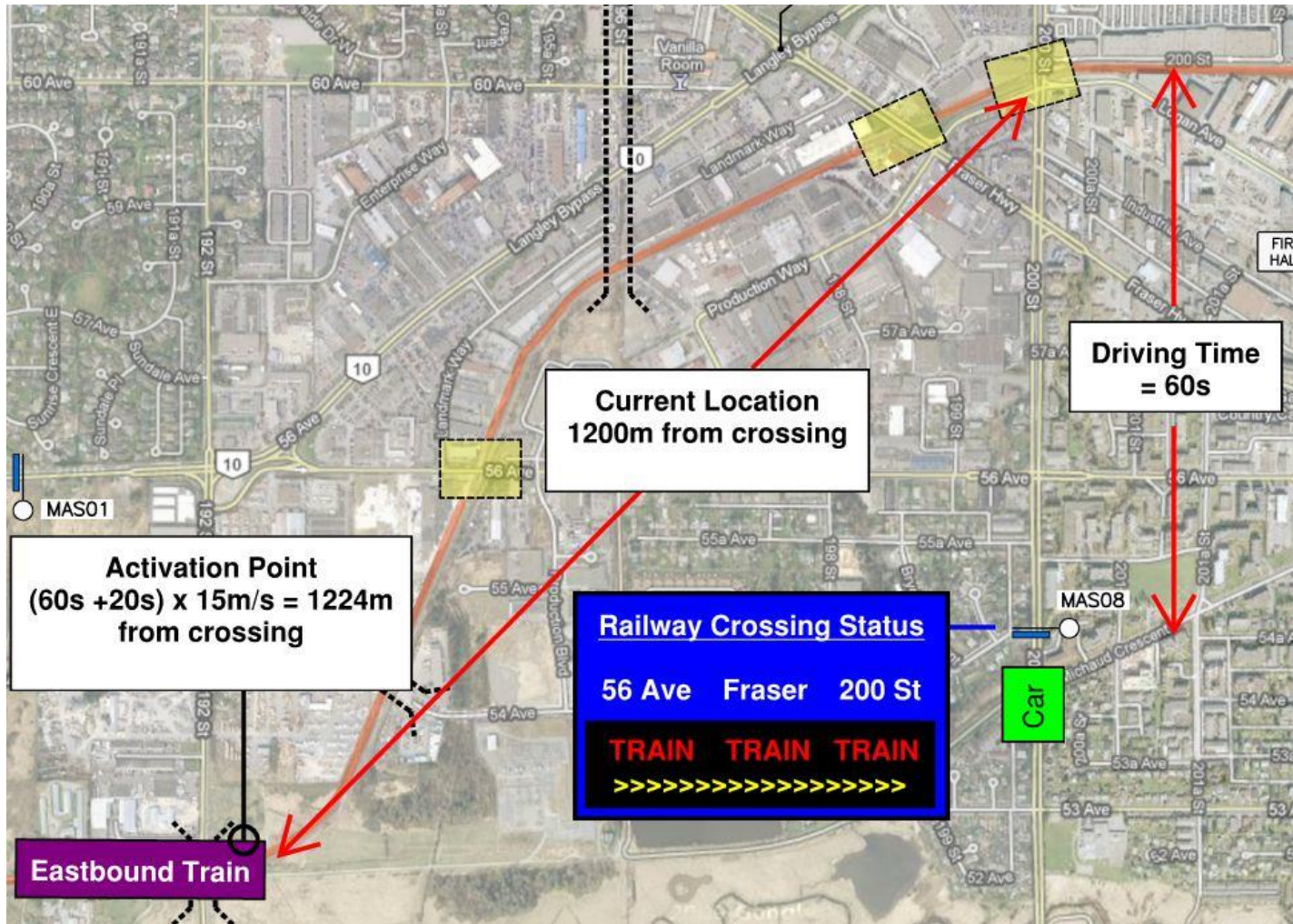


## ***Signs Off***

- Confirm when the train has cleared the at-grade crossings
- Turn off signs



# Concept of Operations



# Safety Elements

- Safety benefits were not identified in business case
- Advanced information to drivers to avoid congestion and queues
- Future integration to no-left turn signs at intersections
- Future integration with first responders to provide crossing status

# Train Detectors



# Motorist Advisory Signs

Rail Crossing Status				
	56 Avenue	Fraser Highway	200 Street	Langley Bypass
Open	●	●	●	●
Closed	●	●	●	●
Train Direction	Westbound ←		→ Eastbound	



Railway Crossing Status			
56 Ave	Fraser Hwy	200 St	Langley Bypass
OPEN	OPEN	TRAIN	TRAIN



RAILWAY CROSSING STATUS			
Langley Bypass	200 St	Fraser Hwy	56th Ave
TRAIN	TRAIN	OPEN	OPEN

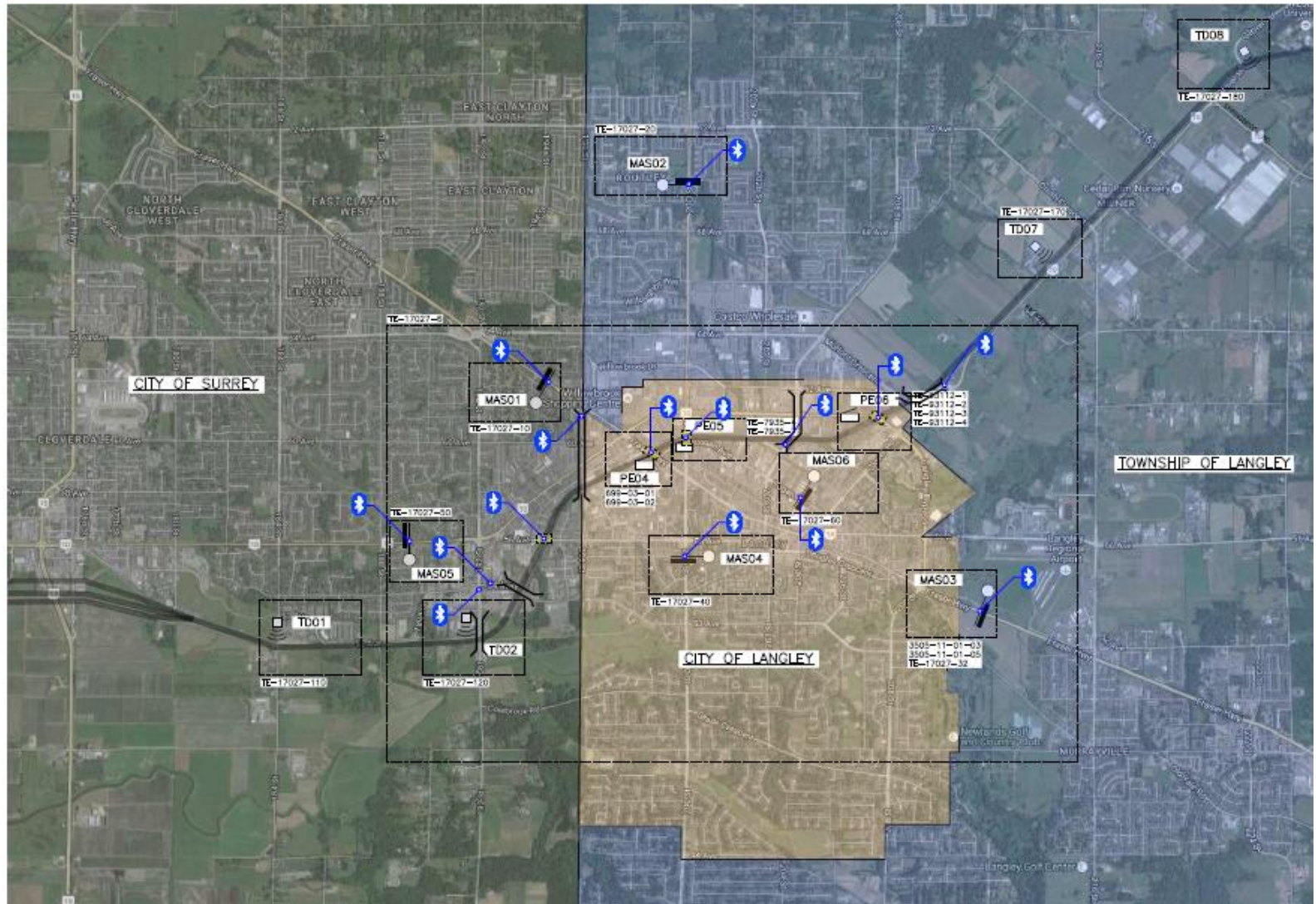
# Motorist Advisory Signs



# Motorist Advisory Signs



# Evaluation





**THANK YOU**