

# Stepping Toward a Safer Tomorrow

Vulnerable Road Users Panel  
CARSP Conference May 28, 2019





# Supporting Healthy School Communities in Alberta

## **Vision**

All Alberta students belong to healthy school communities that enable optimal health and learning.

## **Mission**

To provide provincial leadership that promotes and supports healthy, active school communities through a comprehensive school health approach.

## **Priority**

Lead, support and connect work towards improved health and learning outcomes of children in Alberta.

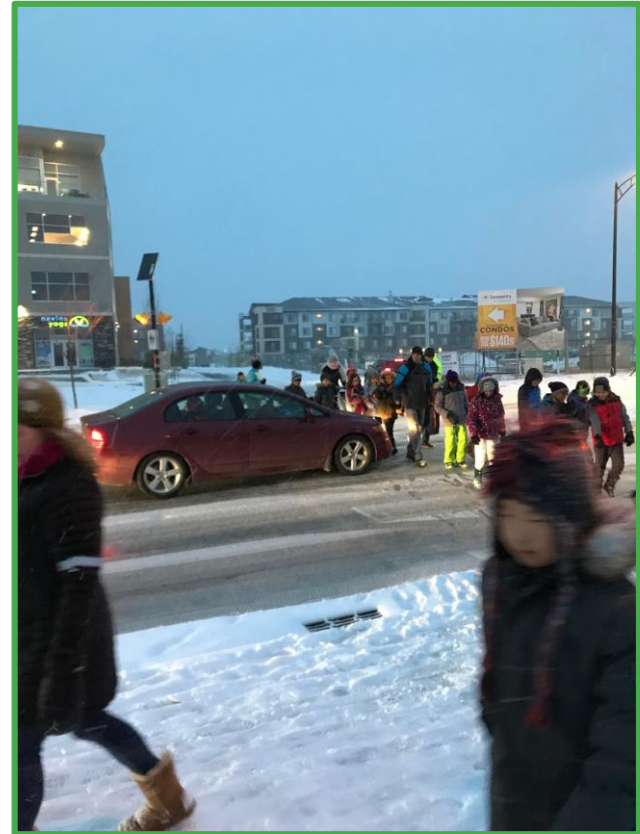




# How does this image make you feel?



# How about these ones?

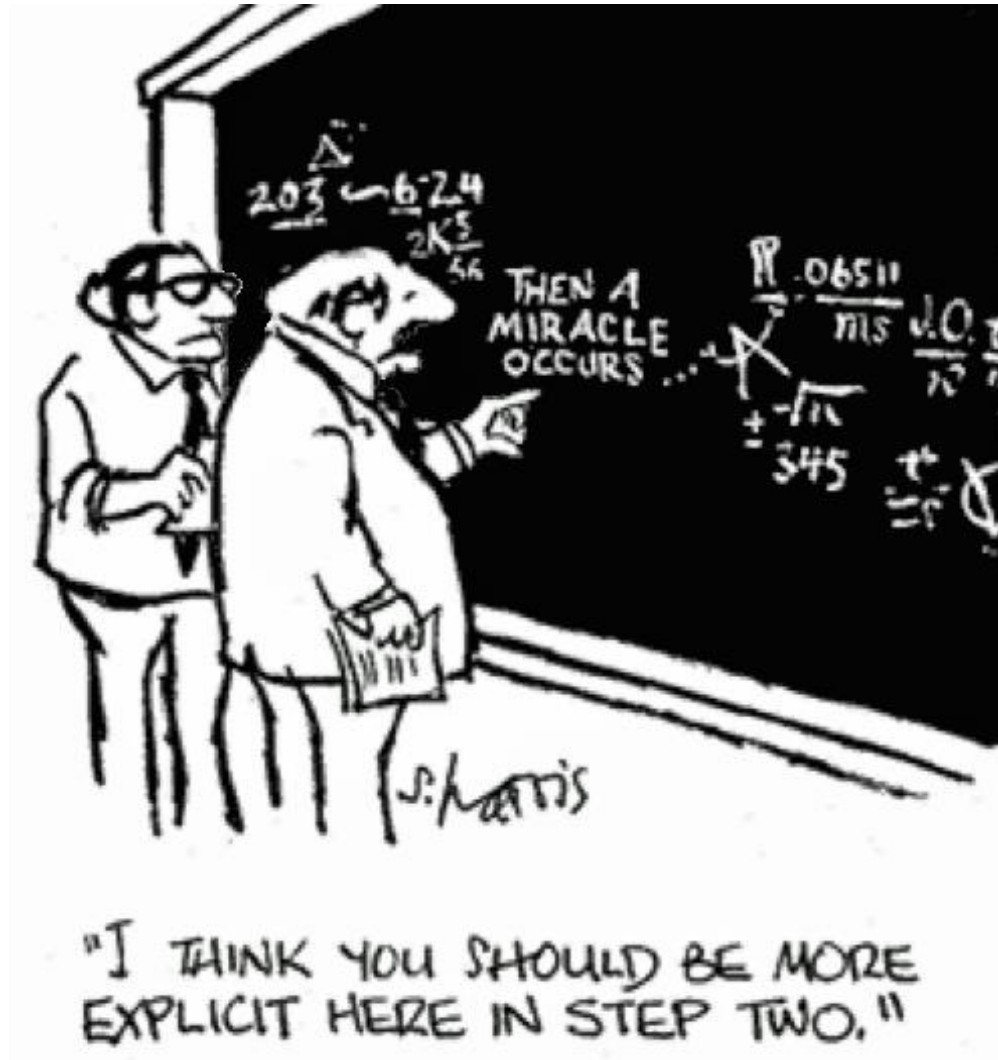


# Why Active School Travel?



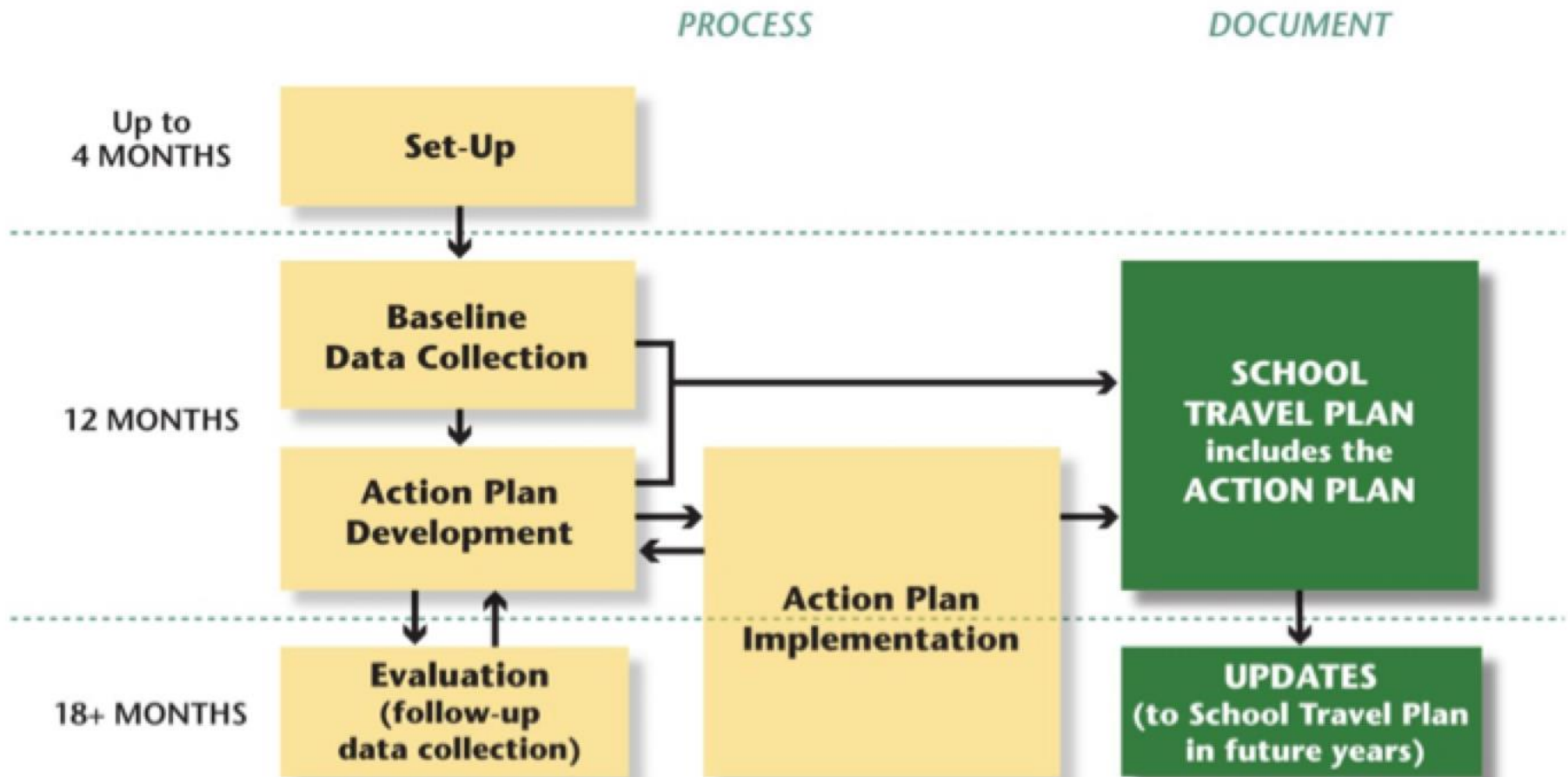
Traffic Inducing Traffic

## What Does it Look Like in Action?





# School Travel Planning



# Six E's of School Travel Planning

Engineering  
Education  
Encouragement  
Enforcement  
Evaluation  
Equity



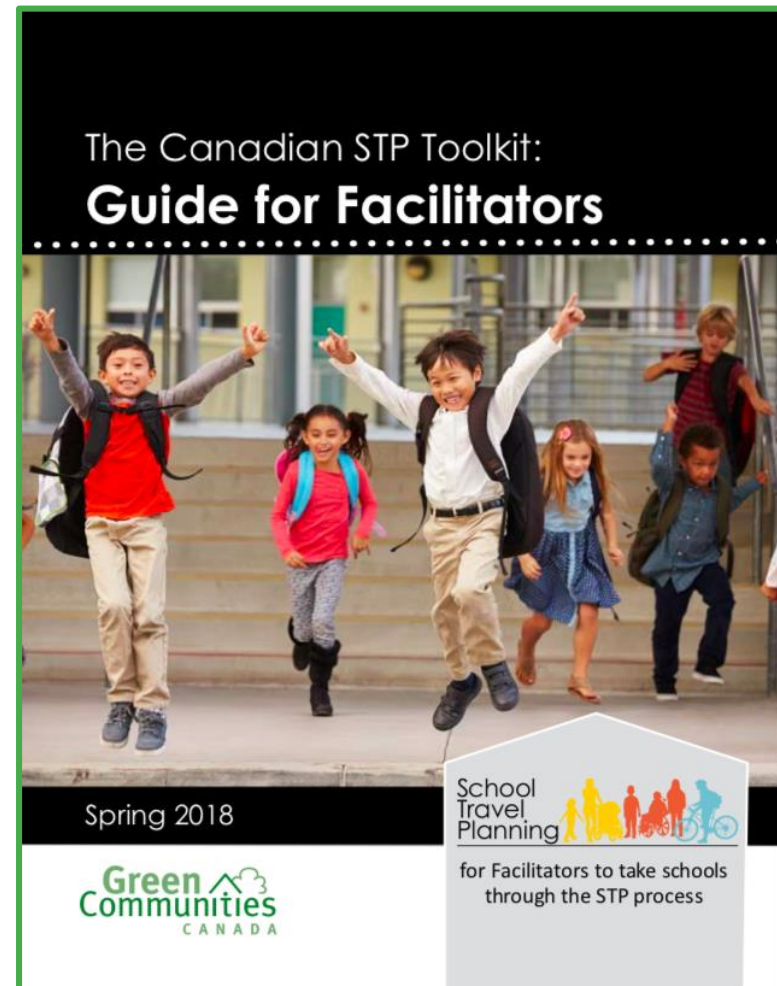


# School Travel Planning Toolkit

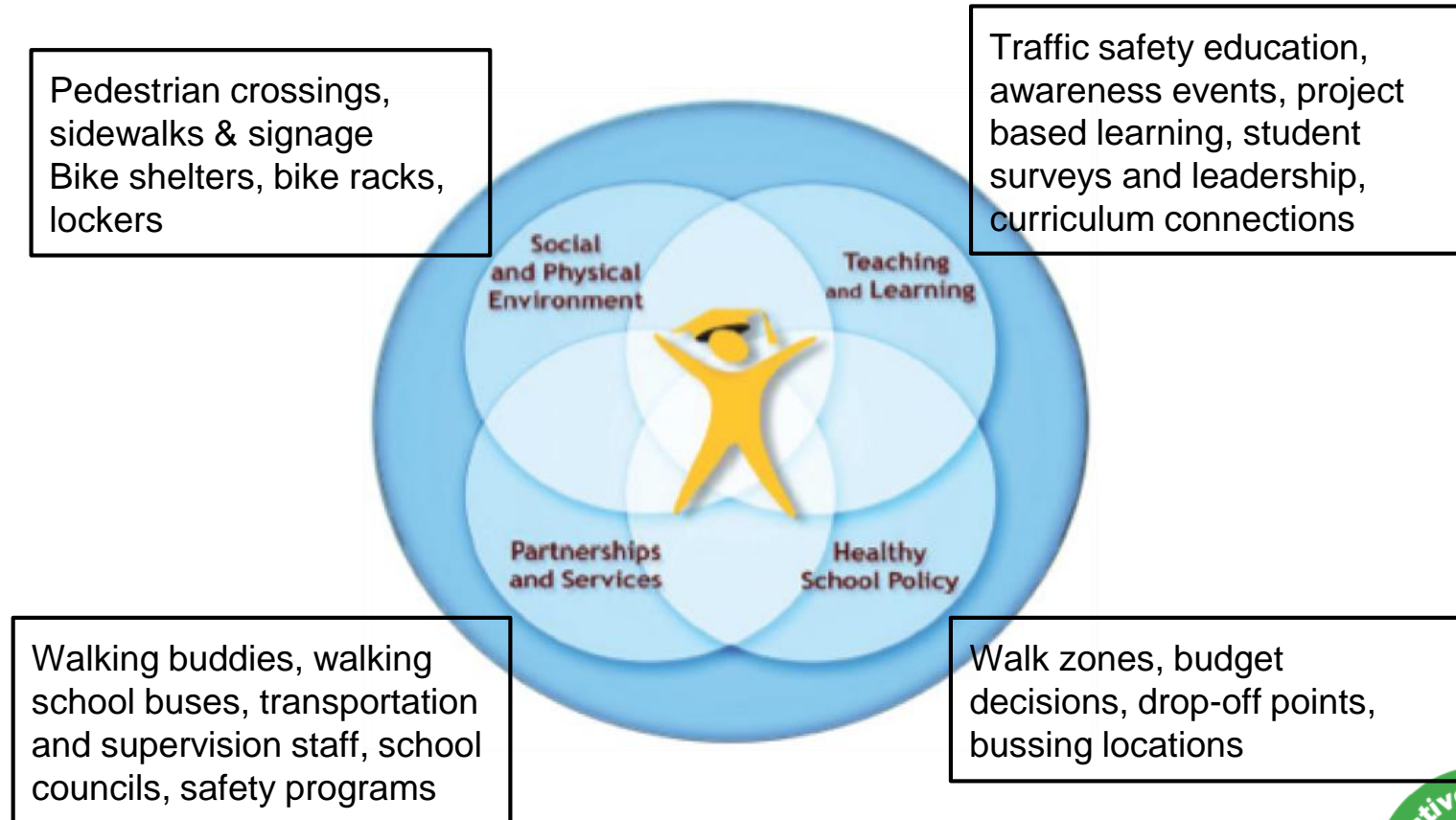
This toolkit is free and accessible to all at the Ontario Active School Travel website.

It includes:

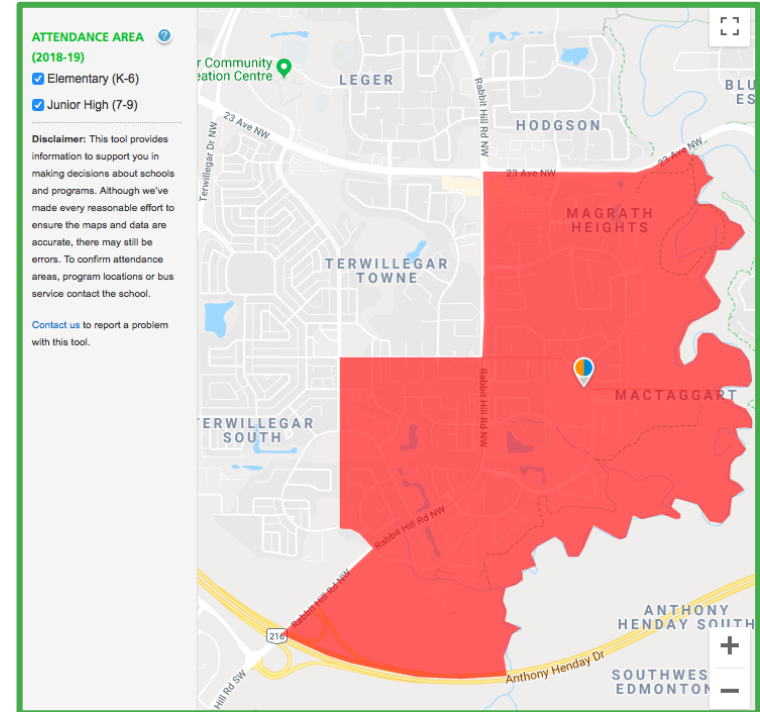
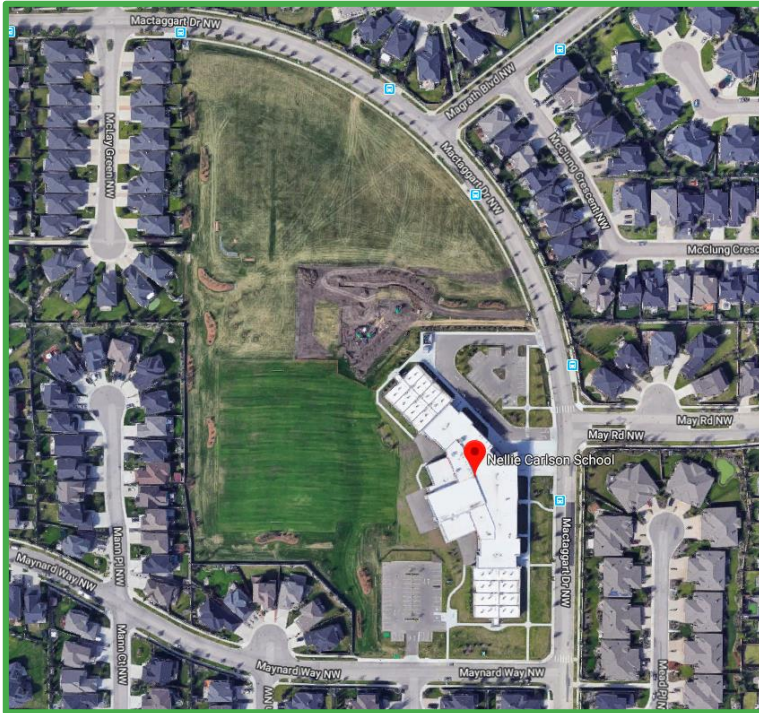
- family and student travel surveys,
- the walkabout checklist,
- travel count templates,
- action planning ideas,
- evaluation tools,
- and the school travel plan template.



# STP and Comprehensive School Health



# STP in Action: Nellie Carlson School



# STP in Action: Nellie Carlson School

- NC school council reached out for STP support
- Administration sign on
- Presentation to school council; administration informed staff
- STP committee formed: champion parent and teacher and AST Coordinator
- Baseline data collected
- Working action plan created





# Mr. Skinner, Math Teacher & AST Champion

“Two of our goals at Nellie Carlson are to ensure students are safe and the second being that students are active. We can do this by reducing the traffic going through our streets.”



Engineering

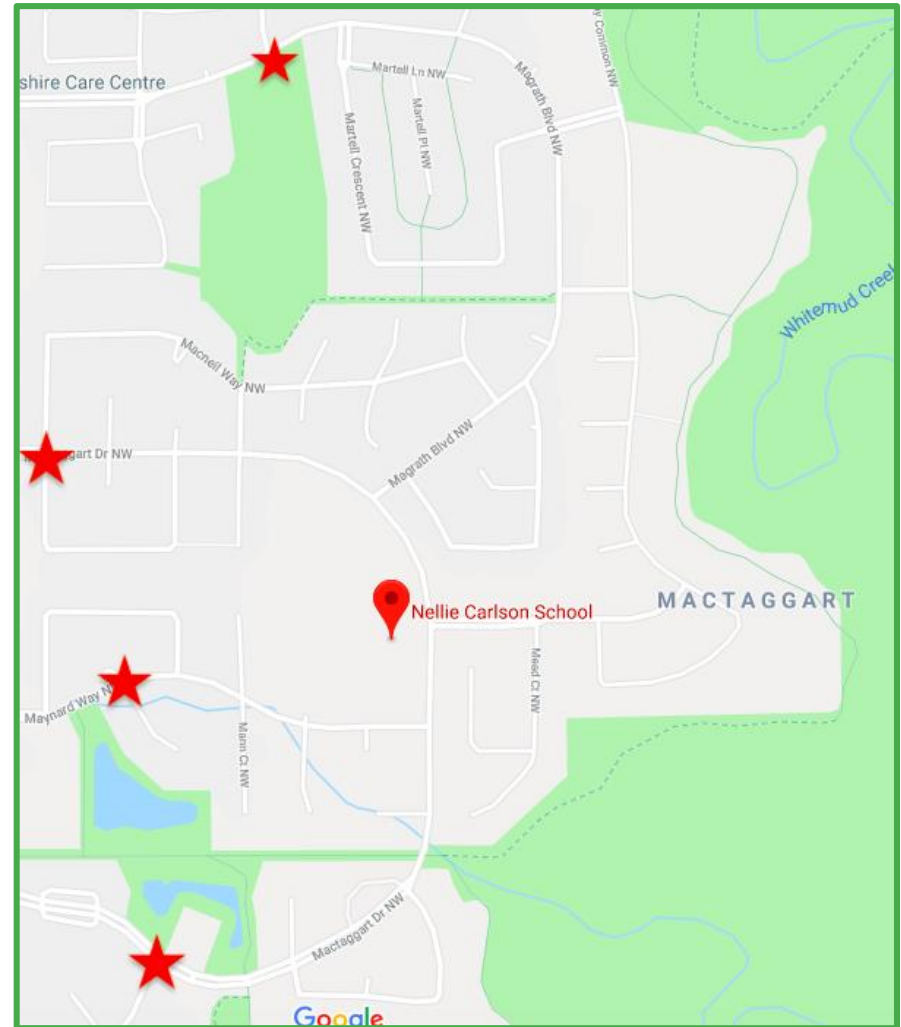


# Green Commuting Hubs

Borrowing a fantastic idea from Captain Nicola Goddard School (CPS), NC is working with the City of Edmonton to create green commuting hubs around NC School.

These hubs (painted markings on sidewalks) act as meet up spots for students so that they are able to walk to school together.

This simple idea increases student physical activity, decreases congestion around the school, increases safety for student active travellers, and provides students an opportunity to socialize and build those core competencies!

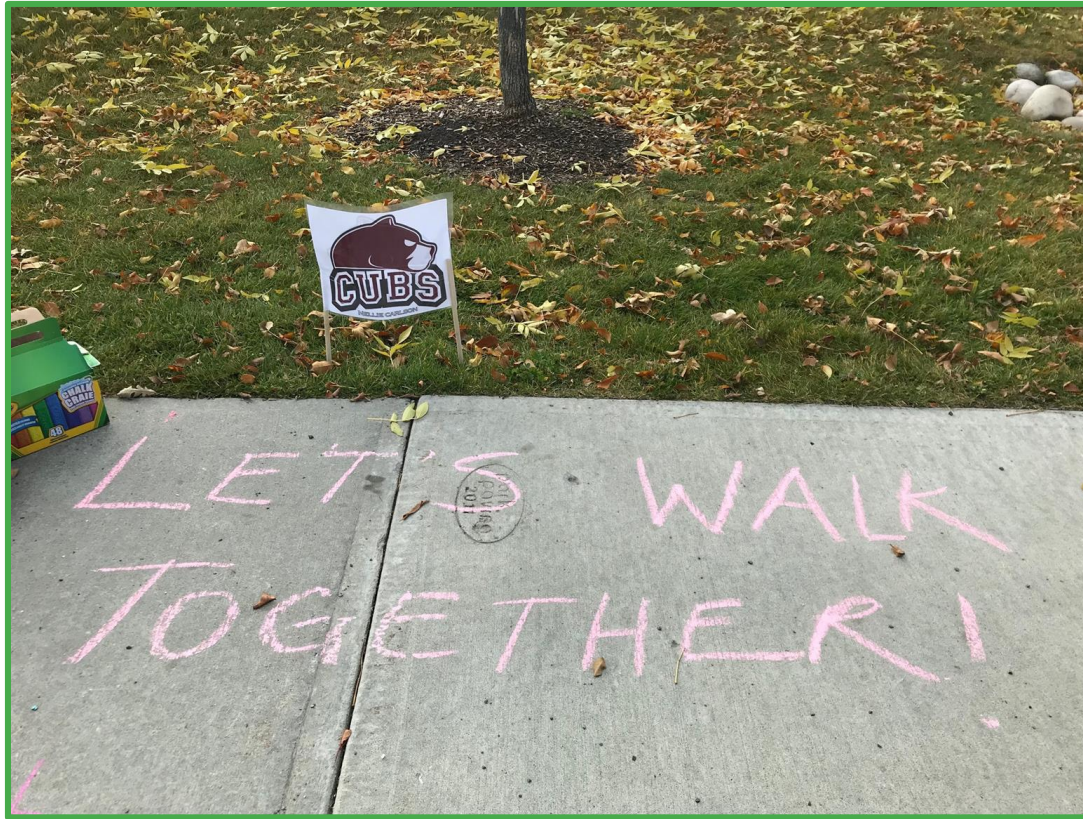


## Engineering



# Green Commuting Hubs & Wayfinding

Engineering



# Education



Traffic observations and educational resources

Pedestrian safety: Pause, Point, Proceed

Cyclist safety: Bike Rodeo

Winter cycling “how tos”





# Bike Safety



"I like walking and biking to school because I get to spend time with my mom and brother" - Sofia Gr. 5



Education

# Safe Winter Cycling

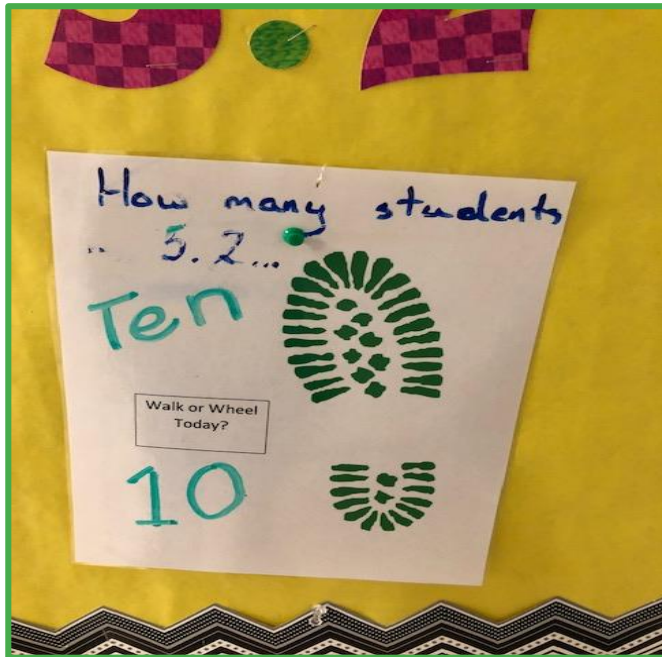


Education: City of Edmonton resources and Karly Coleman Winter Cycling presentation, CanBike trainer and Bike Traffic Reporter for CKUA





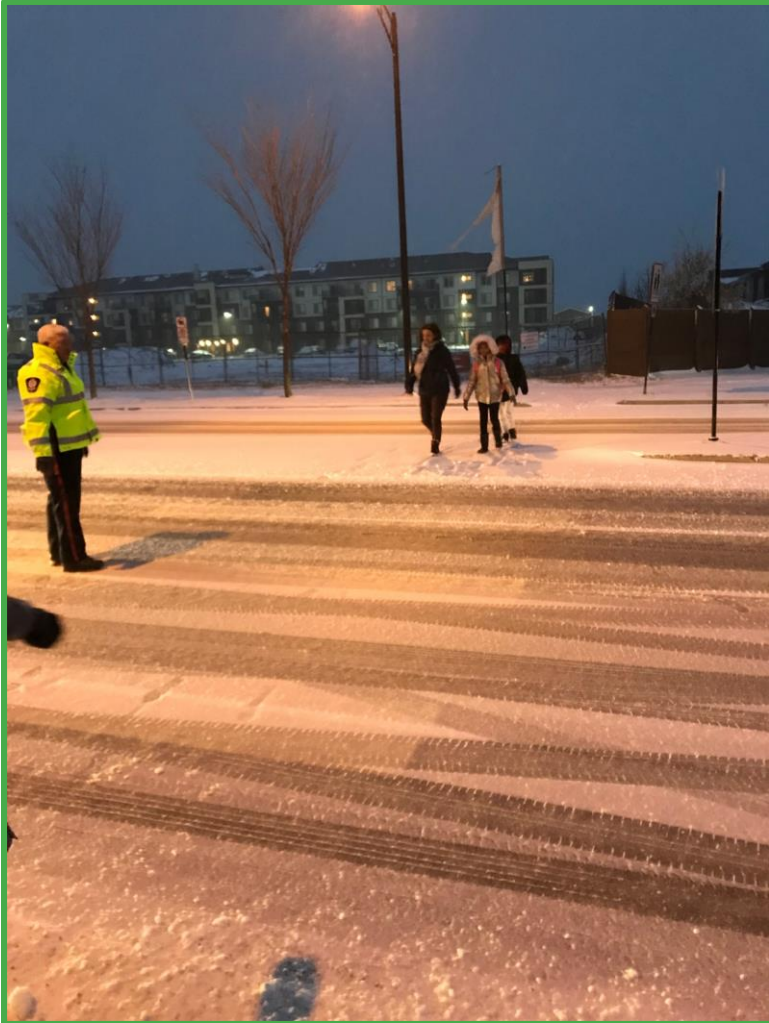
# Encouragement



Why Ellie LOVES winter walking :)



# Enforcement



- Informally with staff on school arrival supervision
- Formally through partnerships with the Edmonton Police Service





# Thank You!



Kerri Murray  
Director of Projects  
[kerri@everactive.org](mailto:kerri@everactive.org)